



Great Gatsby Book

Problem

For a project I got a chance to redesign the interior and exterior for a classic book of our choosing from project gutenber and I chose The Great Gatsby.

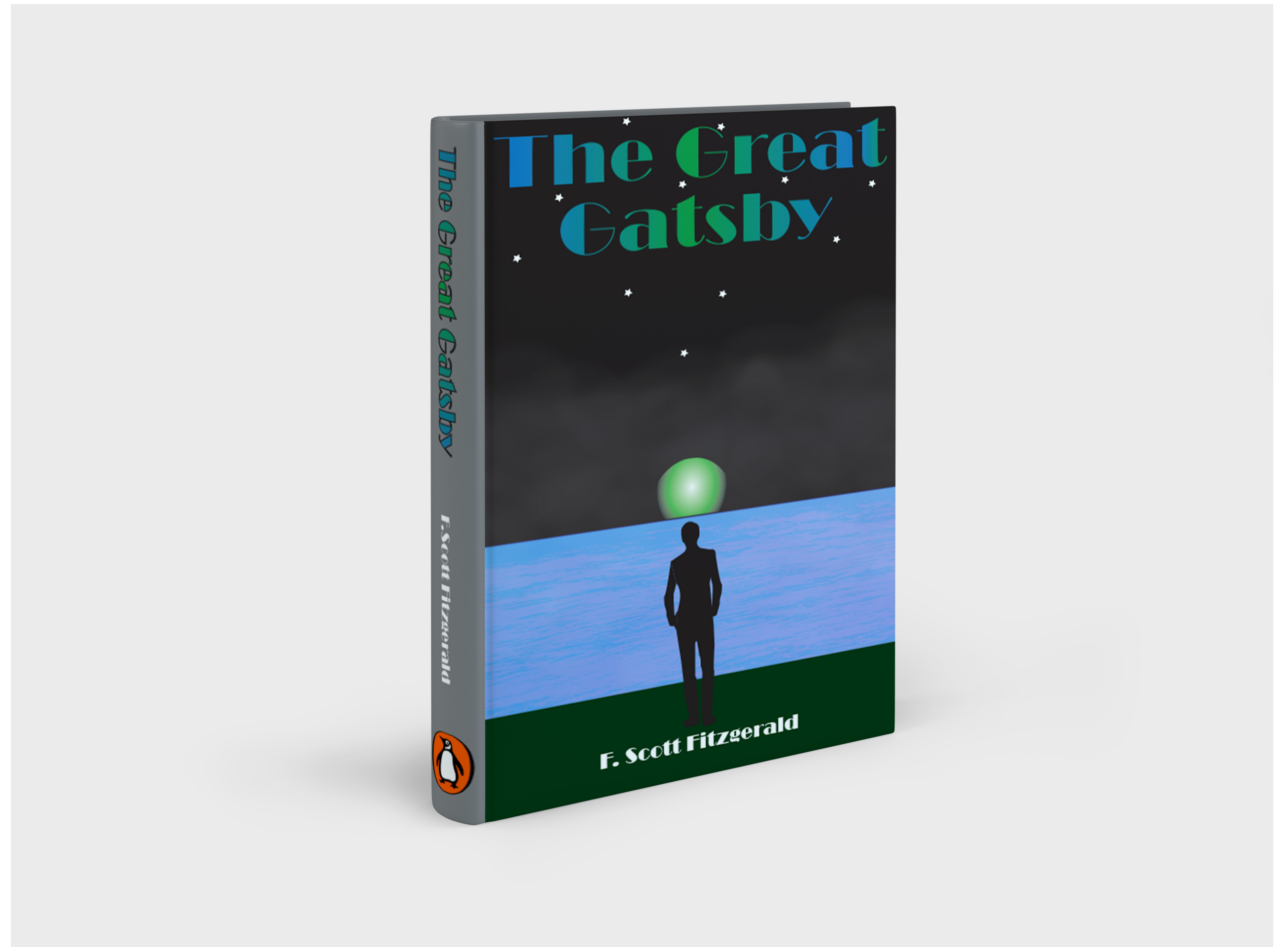
Solution

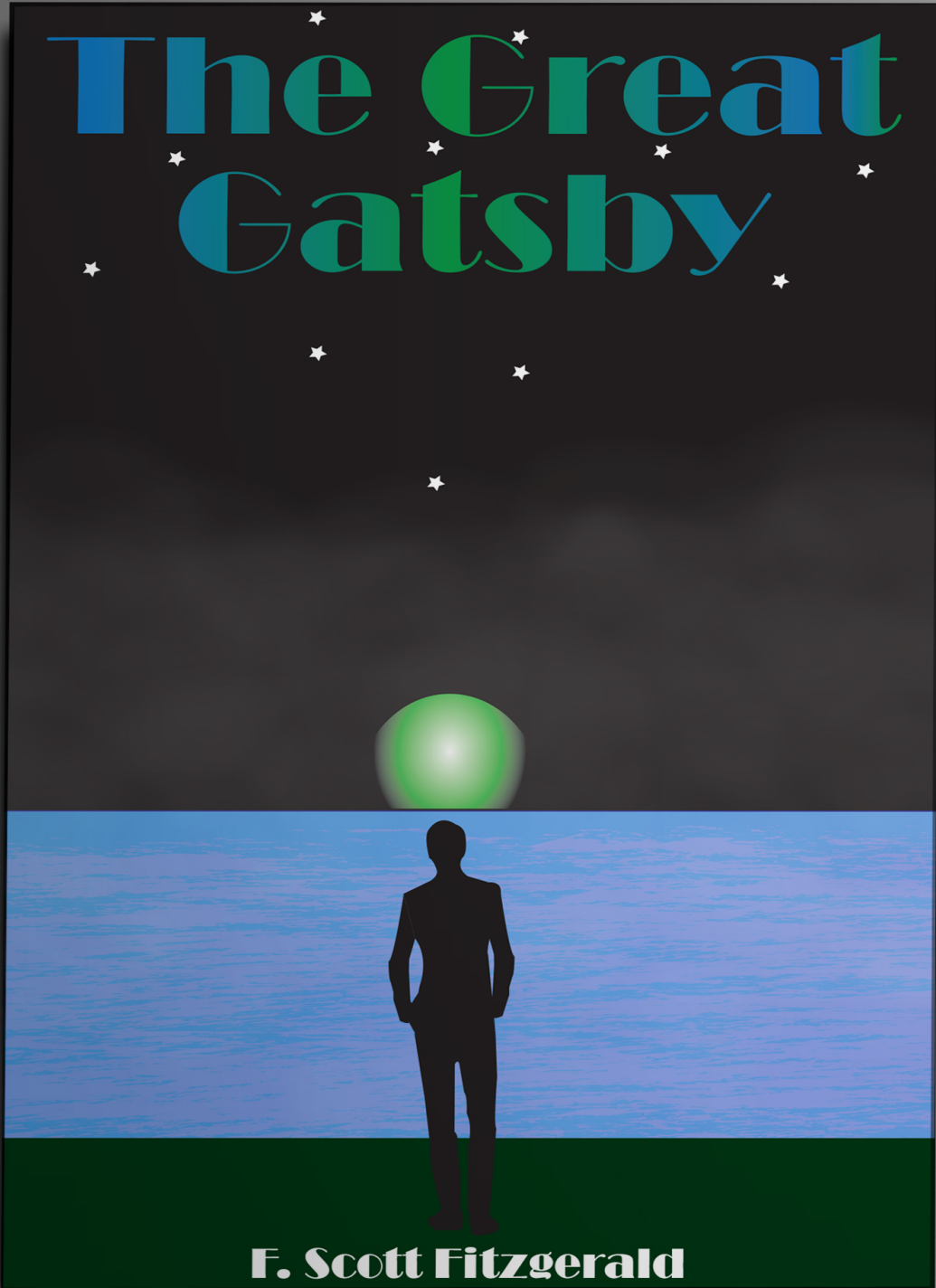
The cover of the book is based off the green light mentioned in the book. The interior of the book has stars in it to show the night sky in the cover and is layed out differently from the original source.

Software

Illustrator

Indesign





Chapter 1

HE DIDN'T SAY ANY MORE, but we've always been unusually communicative in a reserved way, and I understood that he meant a great deal more than that. In consequence, I'm inclined to reserve all judgements, a habit that has opened up many curious natures to me and also made me the victim of not a few veteran bores. The abnormal mind is quick to detect and attach itself to this quality when it appears in a normal person, and so it came about that in college I was unjustly accused of being a politician, because I was privy to the secret griefs of wild, unknown men. Most of the confidences were unsought—frequently I have feigned sleep, preoccupation, or a hostile levity when I realized by some unmistakable sign that an intimate revelation was quivering on the horizon; for the intimate revelations of young men, or at least the terms in which they express them, are usually plagiaristic and marred by obvious suppressions. Reserving judgements is a matter of infinite hope. I am still a little afraid of missing something if I forget that, as my father snobbishly suggested, and I snobbishly repeat, a sense of the fundamental decencies is parcelled out unequally at birth.

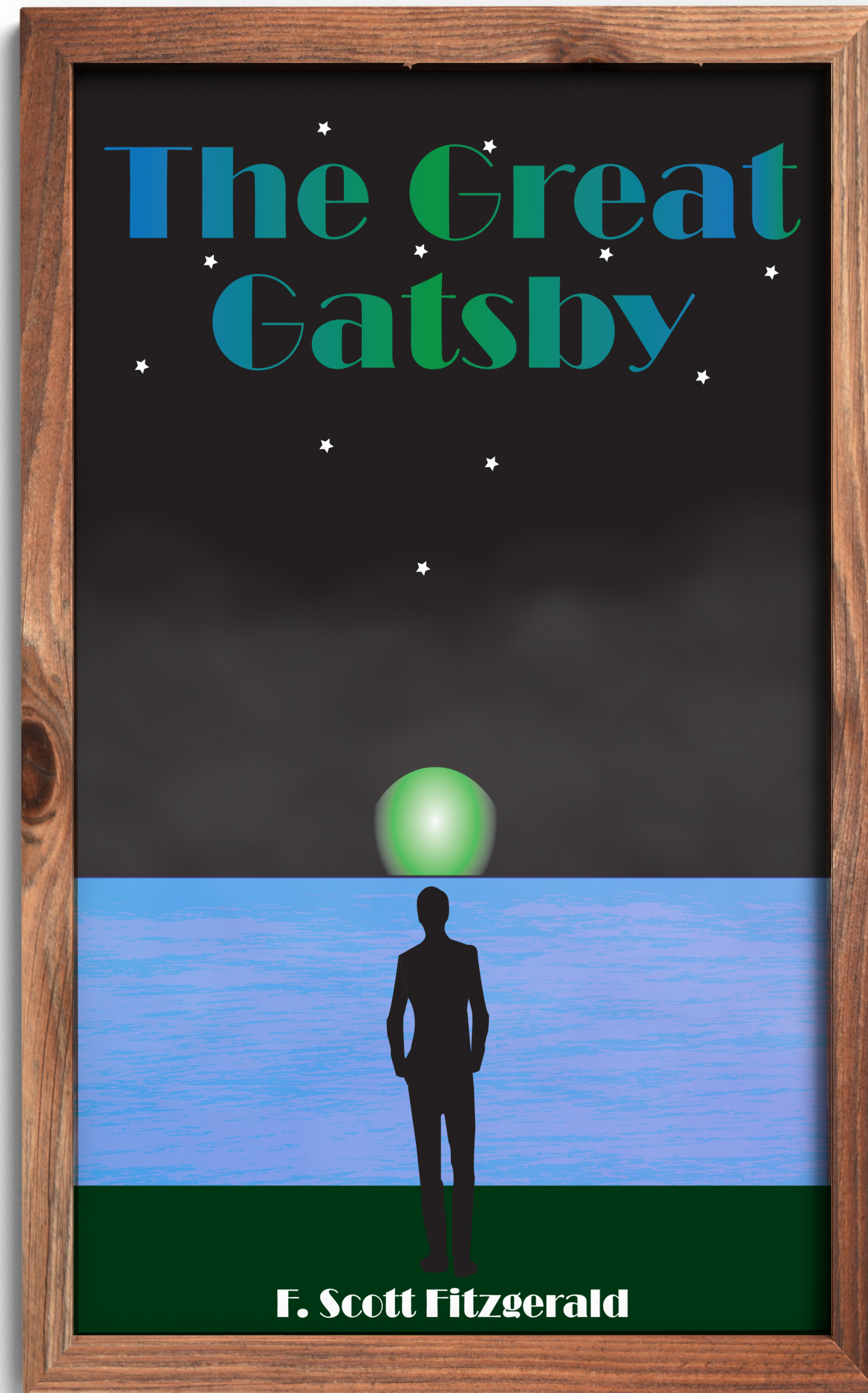
And, after boasting this way of my tolerance, I come to the admission that it has a limit. Conduct may be founded on the hard rock or the wet marshes, but after a certain point I don't

F.Scott Fitzgerald

care what it's founded on. When I came back from the East last autumn I felt that I wanted the world to be in uniform and at a sort of moral attention forever; I wanted no more riotous excursions with privileged glimpses into the human heart. Only Gatsby, the man who gives his name to this book, was exempt from my reaction—Gatsby, who represented everything for which I have an unaffected scorn. If personality is an unbroken series of successful gestures, then there was something gorgeous about him, some heightened sensitivity to the promises of life, as if he were related to one of those intricate machines that register earthquakes ten thousand miles away. This responsiveness had nothing to do with that flabby impressionability which is dignified under the name of the "creative temperament"—it was an extraordinary gift for hope, a romantic readiness such as I have never found in any other person and which it is not likely I shall ever find again. No—Gatsby turned out all right at the end; it is what preyed on Gatsby, what foul dust floated in the wake of his dreams that temporarily closed out my interest in the abortive sorrows and short-winded elations of men.

My family have been prominent, well-to-do people in this Middle Western city for three generations. The Carraways are something of a clan, and we have a tradition that we're descended from the Dukes of Buccleuch, but the actual founder of my line was my grandfather's brother, who came here in fifty-one, sent a substitute to the Civil War, and started the wholesale hardware business that my father carries on today.

I never saw this great-uncle, but I'm supposed to look like him—with special reference to the rather hard-boiled painting that hangs in father's office. I graduated from New Haven in 1915, just a quarter of a century after my father, and a little later I participated in that delayed Teutonic migration known as the Great War. I enjoyed the counter-raid so thoroughly that I came back restless. Instead of being the warm centre of the world, the Middle West now seemed like the ragged edge of the universe—so I decided to go East and learn the



PENTAKILL CONCERT COLLATERAL

Problem:

For this project we were given the choice to pick a band real or fictional and make a poster and some collateral that goes with it for a concert.

Solution:

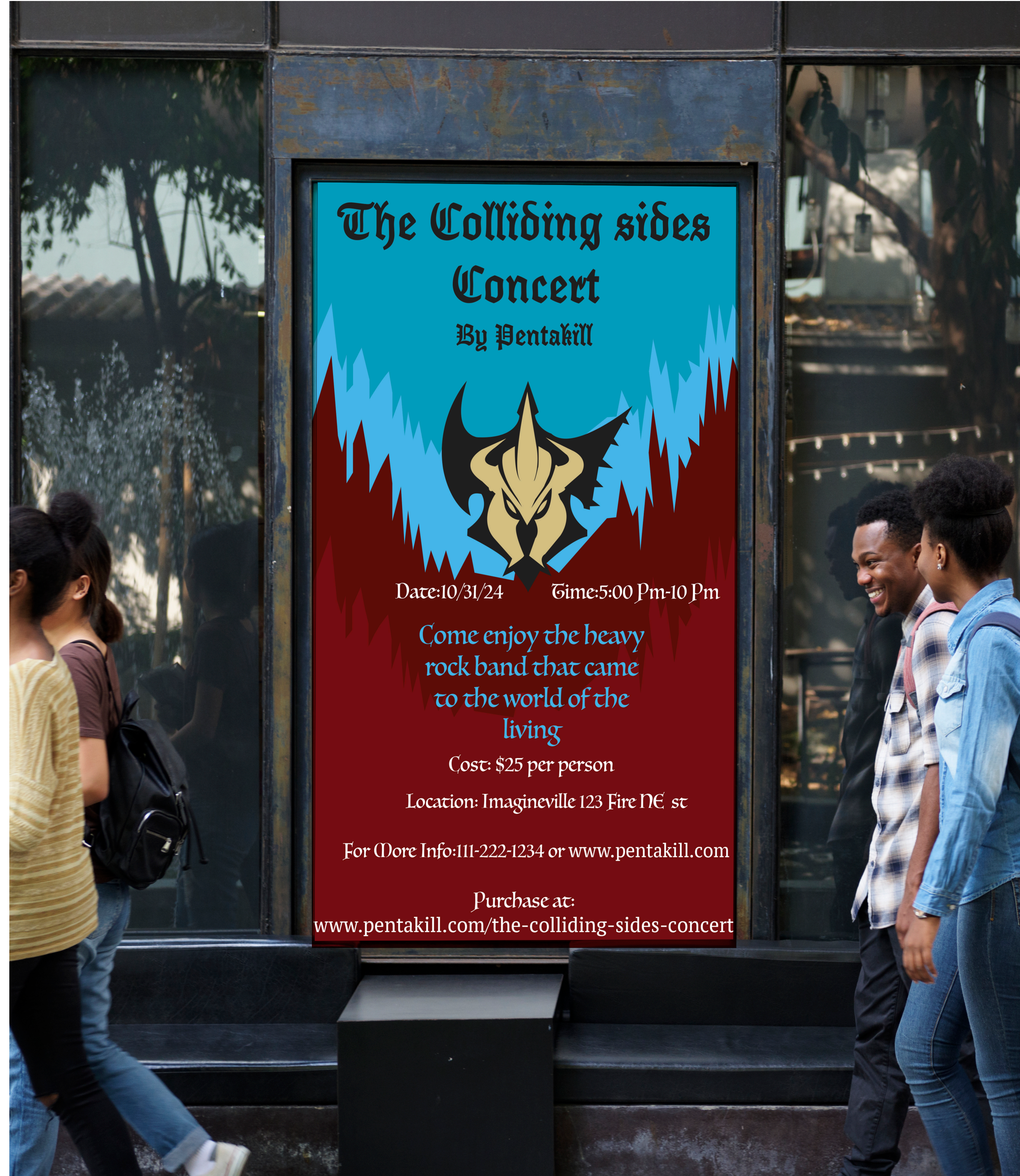
The band pentakill is a fictional band from the game league of legends and I decided to make it red and blue spikey terrain in the background to reference how some of their promotional material looks. I made an album cover and a ticket for the collateral.

Software:

Illustrator

Indesign





WOH Gaming Editorial

Problem:

For a project I had to make a illustration for a article of our choice from a selection, I chose the gaming disorder article.

Solution:

For the illustration I made it to show a person playing video games late at night to highlight the procrastination of chores in the background and give off the gaming addiction feeling as his brain is just a controller.

Software
Illustrator
Indesign





GAMING

WHO classifies ‘gaming disorder’ as mental health condition

By Susan Scutti, CNN



CNN-Watching as a video game ensnares their child, many a parent has grumbled about “digital heroin,” likening the flashing images to one of the world’s most addictive substances.

Now, they may have backup: The World Health Organization announced “gaming disorder” as a new mental health condition included in the 11th edition of its International Classification of Diseases, released Monday.

“I’m not creating a precedent,” said Dr. Vladimir Poznyak, a member of WHO’s Department of Mental Health and Substance Abuse, which proposed the new diagnosis to WHO’s decision-making body, the World Health Assembly. Instead, he said, WHO has followed “the trends, the developments, which have taken place in populations and in the professional field.”

However, not all psychologists agree that gaming disorder is worthy of inclusion in the International Classification of Diseases, known as the ICD.

Characteristics of gaming disorder

A diagnosis standard, the ICD defines the universe of diseases, disorders, injuries and other related health conditions. Researchers use it to count deaths, diseases, injuries and symptoms, and doctors and other medical practitioners use it to diagnose disease and other conditions.

In many cases, health care companies and insurers use the ICD as a basis for reimbursement.

Poznyak said the expectation is that the classification of gaming disorder means health professionals and systems will be more “alerted to the existence of this condition” while boosting the possibility that “people who suffer from these conditions can get appropriate help.”

He said there are three major diagnostic features or characteristics of gaming disorder.

“One is that the gaming behavior takes precedence over other activities to the extent that other activities are taken to the periphery,” he said.

The second feature is “impaired control of these behaviors,” Poznyak said. “Even when the negative consequences occur, this behavior continues or escalates.” A diagnosis of gaming disorder, then, means that a “persistent or recurrent” behavior pattern of “sufficient severity” has emerged, according to the ICD. »





Welding Scoutbook

Problem:

Chemeketa welding asked me to make a scoutbook design related to the program for them for students next year.

Solution:

The design shows a spark at the bottom to represent sparks from a torch as well as a fan up top to suck up the sparks going up, both of which are seen and used for welding.

Software:

Illustrator

Indesign



A'Dove Creations

Problem:

A'Dove Creations is a new pinata business that needed to have a identity to bring in anybody wanting arts and crafts.

Solution:

The logo has dove that has a string attached that gives it a pinata feel as well as a pair of scissors to show the arts and crafts part of the buisness offers.

Software:

Indesign

Illustrator







SLOTH & CHUNKS PUB

Problem

Sloth and Chunk's pub is a fictional food truck that is goonies inspired and needed a logo.

Solution

The logo is burger with the name of the food truck as the patty and has a goonies font to reference what the food truck was inspired by for the name.

Software

Illustrator





FOODS

Mouth Droppin \$8

A burger with bacon, lettuce, american cheese, grilled onions topped with our chunk sauce

CHUNK SPECIAL \$10

A burger with bacon, lettuce, tomatos, ,Peppers, Pepper jack cheese, grilled onions topped with our chunk sauce

SLOTHS ALL STAR \$8

A burger with bacon, lettuce, tomatos, ,Swiss and Blue cheese, grilled onions topped with our chunk sauce

GOOOOONIES \$12

A burger with bacon, lettuce, tomatos, ,Cheddar cheese,Fondue on top of the top bun, grilled onions topped with our chunk sauce

SIDES

Fries \$2

Onion Rings \$3

Pretzel Bites \$3

Poppers \$5

DRINKS

Soda \$2

Beer \$5



Kathy's Burgers

Problem

Kathy's burgers is a fictional fast food place that is based in the 1940's and needs a logo.

Solution

The logo shows a happy little burger mascot since mascot characters were popular then.

Software

Illustrator







MINER-O'S

**TRY OUT OUR
FRUITY GEMS FLAVOR
THAT IS LIMITED TIME
SO ACT FAST AND
GET TO MOVIN
LIKE RANDALF.
OUR CEREAL IS
MADE FROM NATURAL
INGREDIENTS AND
THE HARD WORK
OF THE MINERS
THAT PUT EFFORT INTO
BRINGING THIS CEREAL
OUT OF THE
DEPTHS OF A CAVE**

MINER-O'S

FRUITY GEMS

LIMITED EDITION

SWEET AND CRUNCHY FROM THE MINES

GOLD NUGGET INSIDE

**GLUTEN
FREE**

Nutrition Facts / Datos de Nutrición		serving size / tamaño por ración	
About 14 servings per container / aproximadamente 14 raciones por envase		1 cup / 1 taza (236g)	
		per 1/2 cup (118g)	
Calories / Calorías		140	200
Total Fat / Grasa Total 1 1/2g		25%	25%
Saturated Fat / Grasa Saturada 0g		0%	0%
Trans Fat / Grasa Trans 0g		0%	0%
Polyunsaturated Fat / Grasa Poliinsaturada 0.5g			
Monounsaturated Fat / Grasa Monoinsaturada 0.5g			
Cholesterol / Colesterol 0mg		0%	0%
Sodium / Sodio 150mg		6%	6%
Total Carbohydrate / Carbohidrato Total 30g		11%	11%
Dietary Fiber / Fibra Dietética 3g		6%	10%
Sugars / Azúcares 10g		20%	20%
Total Sugars / Azúcares Totales 12g		22%	20%
Includes Added Sugars / Incluye azúcares añadidos 12g		22%	20%
Protein / Proteínas 5g			
Vitamin D / Vitamina D 400µg		80%	30%
Calcium / Calcio 150mg		10%	20%
Iron / Hierro 2.6mg		20%	28%
Potassium / Potasio 0mg		0%	0%
Vitamin A / Vitamina A 10%		20%	20%
Vitamin B1 / Vitamina B1 10%		20%	20%
Thiamin / Tiamina 10%		20%	20%
Riboflavin / Riboflavina 10%		20%	20%
Niacin / Niacina 10%		10%	10%
Vitamin B6 / Vitamina B6 10%		20%	20%
Folate / Folate 10%		20%	20%
Vitamin B12 / Vitamina B12 10%		20%	20%
Vitamin C / Vitamina C 10%		20%	20%

Ingredients: Whole Grain Oats, Sugar, Corn Starch, Corn Syrup, Salt, Trisodium Phosphate, Brown Sugar Syrup, Natural Flavors, Vitamin A, Vitamin B, Vitamin C, Added to Preserve Freshness.

Vitamins and Minerals: Calcium Carbonate, Vitamin C (sodium ascorbate), Zinc (zinc gluconate), Vitamin A (Vitamin A (retinyl palmitate), Vitamin B₆ (pyridoxine hydrochloride), Vitamin B₁₂ (methylcobalamin), Vitamin E (tocopherol), Vitamin B₁ (thiamine), Vitamin B₂ (riboflavin), A, B Vitamin (folic acid), Vitamin B₁₂, Vitamin D₃.

Ingredients: Avena Integral, Azúcar, Maíz de Diente, Maíz, Sal, Azúcar, Sulfato Trisódico, Jarabe de Azúcar, Miel, Saborizante Natural, Vitamina E, Vitamina C, Vitamina B₁₂, Vitamina B₆, Vitamina B₁, Vitamina B₂.

Vitamins and Minerals: Carbonato de Calcio, Vitamina C (ascorbato de sodio), Zinc (óxido de zinc), Vitamina A (Vitamina A (retinilo palmitato), Vitamina B₆ (clorhidrato de piridoxina), Vitamina B₁₂ (clorhidrato de metilcobalamina), Vitamina E (tocoferilo), Vitamina B₁ (tiamina), Vitamina B₂ (riboflavina), A, B Vitamina (ácido fólico), Vitamina B₁₂, Vitamina D₃.



Rock and stone

HELP RANDALF THE DWARF FIND A WAY OUT!

EXIT

**RANDALF IS A
DWARF MINER WHO
IS PASSIONATE ABOUT
COLLECTING GEMS FOR HIS
FAMILY OWNED BUISNESS.**

GOLD NUGGET INSIDE

MINER-O'S Cereal Box

Problem

We had to make a cereal box brand as well as a package design for it for a class project

Solution

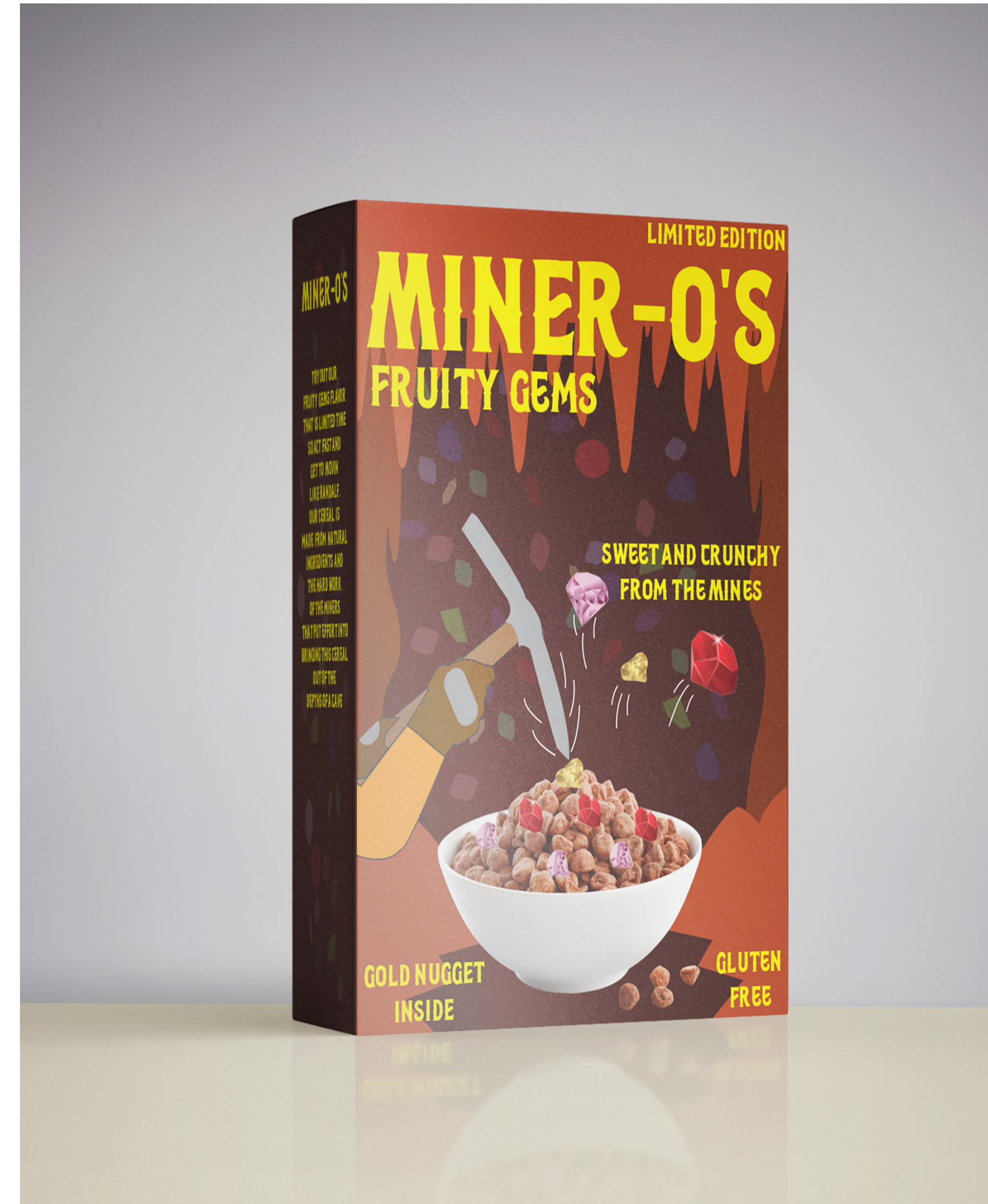
I made a cereal brand call MINER-O's and made it mining themed. I added a brand story, interactive components like the maze, list of ingredients, barcode just like cereals you would see.

Software

Illustrator

Indesign

Photoshop







GRANDMA'S FURY

Problem

We had to make a design for a box as well as a brand for a item that will fit into the box.

Solution

I made a hot sauce brand named grandma's fury inspired by how some grandma would discipline using hot sauce. For the design I made it a mad grandma looking at someone with fire behind her to show how angry she is. I included a ingredients list and a barcode to give it more qualities of a hot sauce box.

Software

Illustrator

Indesign





THANK YOU!

971-241-5770

GMDesigns@gmail.com

gmdesigns.org